

NETGEAR® is a leading provider of switches for organizations of all sizes. NETGEAR ProSafe® Switch solutions range from plug-and-play unmanaged desktop units, to the versatile Plus and Smart switches, to high-performing wire-speed Layer 3 fully-managed rack mount systems. NETGEAR products are tailored to deliver the performance, ease-of-use, and reliability your infrastructure requires.



NETGEAR® ProSafe® Switch Family Overview

Connectivity is the lifeline of today's dynamic business world. The ever growing demand for faster speeds and more versatile networks can be hard to keep up with for any business. Virtualization, VoIP, video conferencing, and other business applications can quickly saturate older, slower networks. NETGEAR ProSafe Switches are designed for today's demanding business environments where secure, fast, and reliable connectivity are critical. By using NETGEAR ProSafe Switch solutions for your network infrastructure, you can be sure that your network can grow with your business.

Maximum Performance for Your Network Infrastructure

From the edge to the core, NETGEAR offers a wide range of switches to empower your infrastructure with the throughput it needs to satisfy bandwidth-thirsty applications and servers. NETGEAR switches deliver Gigabit connectivity and true stacking for high performance and easy scalability. And optional 10 Gigabit modules mean that NETGEAR can meet your needs today, while providing your network room for future growth.

Rock Solid Reliability

Uptime is critical for any business. That's why NETGEAR switches are designed with reliability in mind and are built to last. Each unit undergoes multiple phases of rigorous testing before it is shipped to ensure it can stand up to any application it will encounter at your business. Our managed switches support hot-swappable redundant power supplies to further protect your infrastructure. For peace of mind, all NETGEAR switches are backed by our industry leading lifetime warranty.

Feature Rich Yet Affordable

With a wide range of switches, any business, regardless of size or applications, can find the right NETGEAR switching solution. ProSafe Plus switches include basic monitoring and configuration features such as VLANs and QoS while remaining cost competitive with other vendors' unmanaged offerings. ProSafe Smart switches support advanced configuration and a wide range of applications such as VoIP, video, and advanced security. Our managed switches feature cutting edge technologies such as VLAN routing and 10 Gigabit Ethernet to maximize throughput and flexibility. Green features found in our switches help save ongoing operational costs as well as the environment.

Simple Deployment and Management

To enable maximum flexibility, NETGEAR ProSafe Switches can be managed through SNMP, CLI, or an intuitive Web interface. Comprehensive remote administration capabilities reduce the need for on-site administration and built-in testing capabilities make it easy to do things like easily locate cable-related network problems. With power over ethernet (PoE), you can eliminate extra cables and the need to place units near power outlets, offering maximum deployment flexibility. Easy to deploy, easy to manage – NETGEAR ProSafe Switches are designed for simplicity.

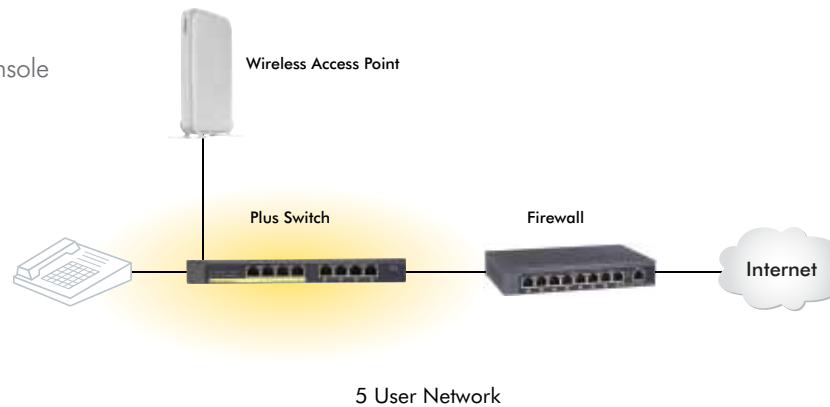
Easily build and grow your network with NETGEAR ProSafe switches

Whether it's a basic switch on your desk or a fully managed layer 3 switch at the core of your network, NETGEAR provides a simple, reliable, affordable solution for your business.

For SOHO

Key Attributes

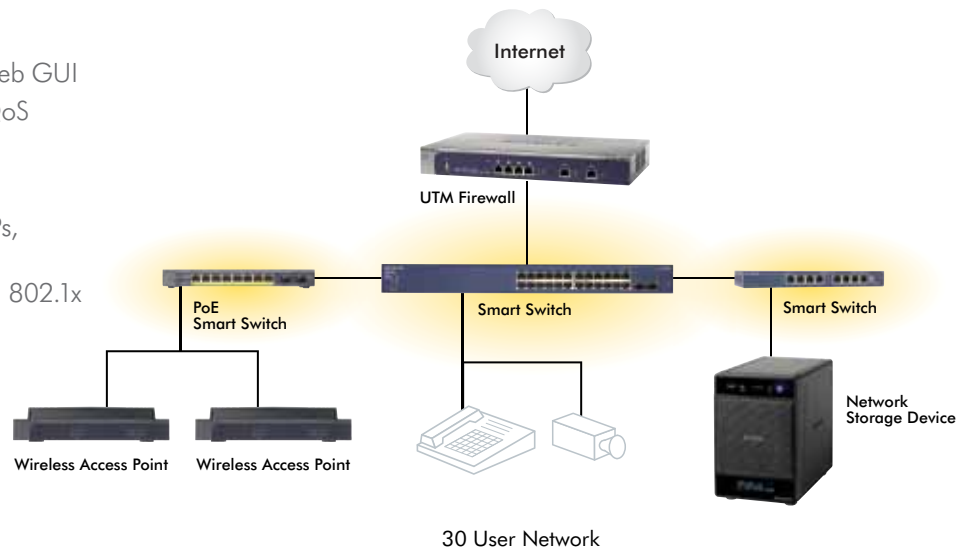
- Configurable with simple software console
- Prioritize video/voice with QoS
- Monitor network traffic
- Create basic VLANs
- PoE ports power wireless AP and IP phones
- Green energy savings



For Small Networks

Key Attributes

- Configurable with simple Web GUI
- Prioritize video/voice with QoS
- Monitor network traffic
- Create and manage VLANs
- PoE ports power wireless APs, IP cameras, and IP phones
- Secure access with ACL and 802.1x
- Green energy savings



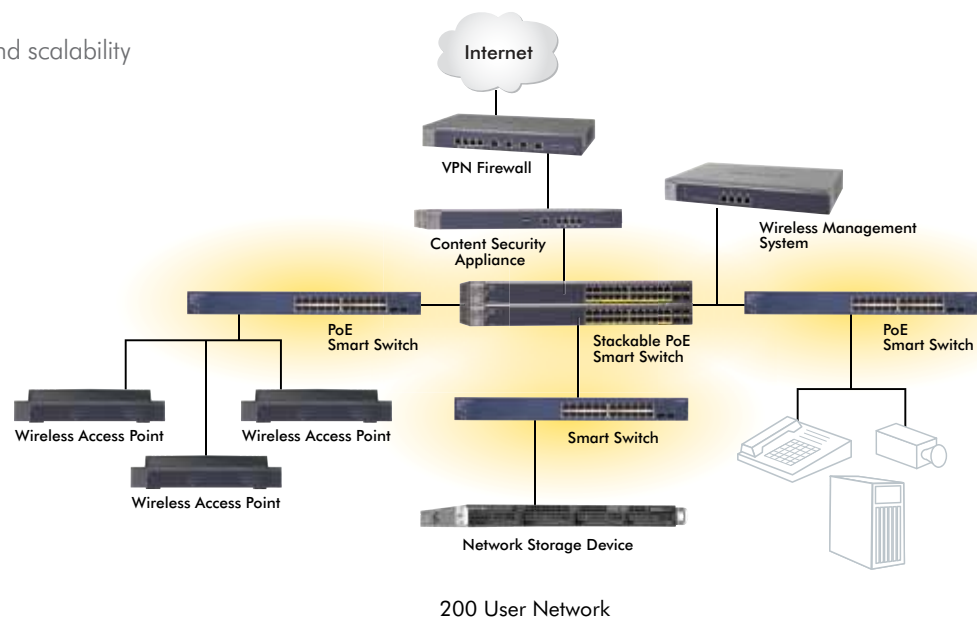
High Performing, Feature-Rich

NETGEAR switches are tuned for maximum performance, with the features and scalability you need to support today's business infrastructure.

For Medium Networks

Key Attributes

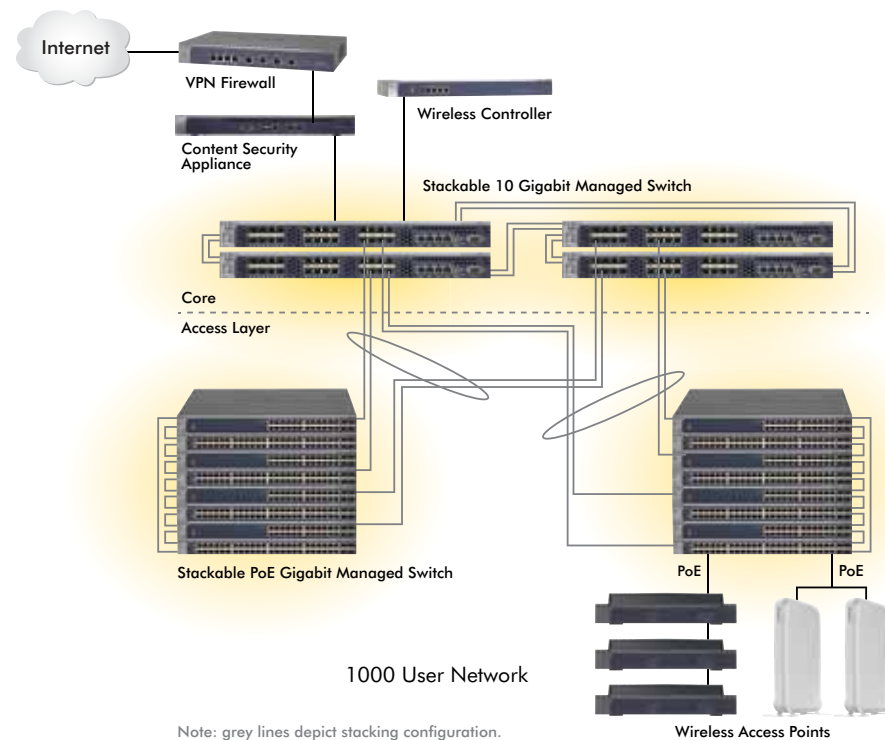
- Configurable with simple Web GUI
- Prioritize video/voice with QoS
- Monitor network traffic
- Create and manage VLANs
- PoE ports power wireless APs, IP cameras, and IP phones
- Secure access with ACL and 802.1x
- Stacking support for easy scaling
- Green energy savings



For Large Networks

Key Attributes

- Fully managed solutions for Core, Aggregation and Access layers
- Consistent Web interface and industry-standard CLI
- Simplified network architecture with stacking and intelligent load-balancing
- More flexibility with built-in 10 Gigabit ports
- Layer 2+ and Layer 3 scalability
- PoE ports power wireless APs, IP cameras, and IP phones
- Enterprise-class central management (NMS200)



From the SOHO to small and medium enterprises, NETGEAR ProSafe Switching solutions offer a wide range of reliable switches designed specifically for your network.



UNMANAGED

Key Features

- Gigabit connectivity
- Power-over-Ethernet (POE) options
- Green power saving features
- Lifetime warranty

PLUS

Key Features

- Basic VLAN
- Basic QoS
- Traffic monitoring
- Software-based management
- Power-over-Ethernet (POE) options
- Green power saving features
- Lifetime warranty



SMART

Key Features

- Advanced traffic management
- Enhanced security (802.1x/ACL)
- STP, IGMP
- Web-based management
- Gigabit Fiber options
- Stacking support for scalability
- Power-over-Ethernet (POE) options
- Lifetime warranty

MANAGED

Key Features

- Enterprise traffic management
- CLI and Web-based management
- Flexible network architectures
- Built-in 10 Gigabit ports
- L2+ / L3 scalability
- Superior resiliency
- Advanced routing protocols such as OSPF, VRRP, and Multicast
- Lifetime warranty



The Lifetime Hardware Warranty only covers hardware, fans, and internal power supplies, and does not include external power supplies or software. Hardware modifications or customization void the warranty. The warranty is only valid for the original purchaser and cannot be transferred.

For more information, case studies, and whitepapers, visit www.netgear.com

NETGEAR[®]
Connect with Innovation[™]

www.netgear.com

NETGEAR, the NETGEAR logo, Connect with Innovation, and ProSafe are trademarks and/or registered trademarks of NETGEAR, Inc. and/or its subsidiaries in the United States and/or other countries. Other brand names mentioned herein are for identification purposes only and may be trademarks of their respective holder(s). Information is subject to change without notice. © 2010 NETGEAR, Inc. All rights reserved.